



允享機械股份有限公司
WIN SHINE MACHINERY CO.,LTD



紙餐盒 / 碗 / 盤 / 杯 專用機械專業製造廠
Specialized Factory of Paper Food Containers
Forming Machines



INDEX目錄

- 1** Index
目錄

- 3** About us
公司簡介

- 4** WS-1100 : Paper lunch box forming machine
【單格】紙餐盒成型機

- 5** WS-1107 : Fresh box forming machine
生鮮盒成型機

- 6** WS-3301 & 3302 & 3303 : 2-Mold Paper plate, bowl forming machine
【雙模】紙盤.紙碗成型機

- 7** WS-6601 & 6602 & 6603 : 1-Mold Paper plate , bowl forming machine
【單模】紙盤.紙碗成型機

- 8** WS-8801 & 8802 :Two Compartment Lunch box forming machine
兩格紙餐盒成型機

- 9** WS-8804 : Hamburger box forming machine
漢堡盒成型機

- 10** WS-8809: 1-Mold 3-5 Compartment Lunch box forming machine
【單模】三格，四格，五格，紙餐盒成型機

- 11** WS-8809: 2-Mold 3-5 Compartment Lunch box forming machine
【雙模】三格，四格，五格，紙餐盒成型機

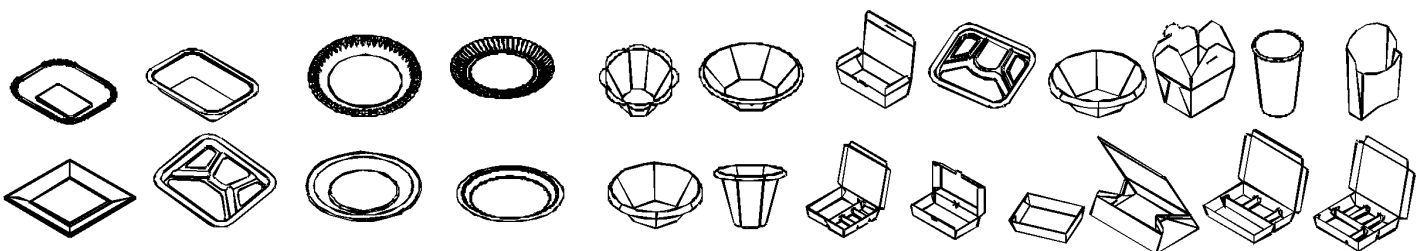
- 12** WS-8809HC: 3-5 Compartment Lunch box forming machine
【自扣式】三格，四格，五格，紙餐盒成型機

- 13** WS-9902:Paper pail, to-go box forming machine
【單模】外帶盒成型機

- 14** WS-9905 & 9905D
Paper pail, Carton erecting and gluing machine
高速外帶盒成型機-膠水黏合

INDEX 目錄

- 16 WS-M CUP SERIES : Paper cup forming machine
 中速紙杯成型機
- 17 WS-P CUP SERIES : Paper cup forming machine
 低速紙杯成型機
- 18 WS-P850 : Paper Punching Machine
 高速多模切紙片成型機



公司簡介

允享機械成立於民國79年，率先生產環保專業紙餐盒成型機，由單格紙餐盒、多格餐盒、漢堡盒、餐盤、餐碟、齒型圓盤、六角碗、八角碗、外帶盒、紙杯、湯碗....，發展至今的三格、四格、五格紙餐盒成型機等系列商品廣受各界好評。

目前機械已行銷世界各國，歐美、日本、墨西哥、土耳其、伊朗、東南亞、韓國、中國大陸、菲律賓、印度、印尼、新加坡、俄羅斯...等等。

敝司累積20餘年專業經驗、擁有多項多國專利技術與良久信譽，更獲得ISO2008及CE認證，相信更能為廣大客戶與愛用者開發更佳美感造型盒體設計、創造更佳生產效率與耐用之機械、提供更熱忱專業技術服務。

以此竭誠為台灣與世界各地使用者服務，並歡迎各種合作模式共同發展，互助互惠為環保盡心力！

About us

Win Shine has been a recognized leader in the R&D and manufacturing of paper food packaging containers making machines for more than a quarter of the century when the environmental protection concept was forming. At that time, the whole world rose in support green color paper packages and against polyester products. Due to the concept of environmental friendly, we build a wide range of paper container producing machines and market them to all over the world.

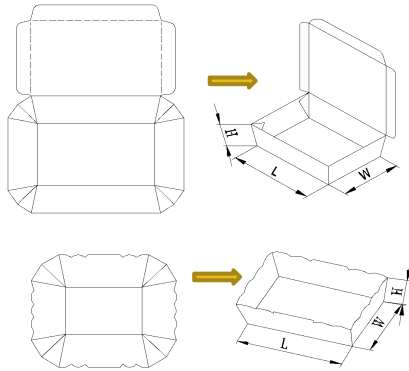
We are very proud and responsible to our creatures. As we insist to make each part's quality stable and durable. Constantly improving leads our team to be more and more professional and strong team. Your any advices are most welcome.



WS-1100

Paper lunch box forming machine

【單格】紙餐盒成型機



UNIT: mm

Dimension Model	L	W	H
WS-1101	150~185	90~115	20~43
WS-1102	90~120	70~110	20~43
WS-1103	70~120	50~80	20~43
WS-1105	190~250	125~150	40~60

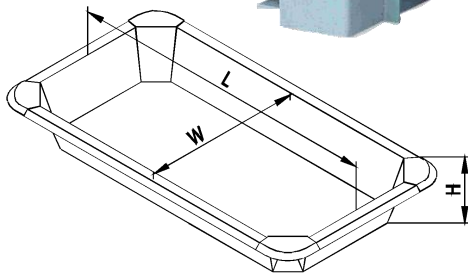
Model No.	WS-1101	WS-1102	WS-1103	WS-1105
Description				
Production Speed (pcs/min)	50~55			35
Sealing Method	Hot air heater sealing			
Paper Material	Single or double PE coated paper ISG-280g/ m ² ~340g/ m ²			
Paper Thickness	0.38mm ~ 0.47mm			
Electrical Requirement	5.5Kw/hr.			
Air Requirement	6kg/c m ² * 500 L/min			
M/C Dimension (cm)	166 x 114 x209			166x270x230
Weight(NW kg)	480~700			

©Custom design is welcomed

© We reserve the right to alter specifications without prior notice.

WS-1107

Fresh box forming machine 生鮮盒成型機



UNIT: mm

L	W	H
150-185	90-115	20-43

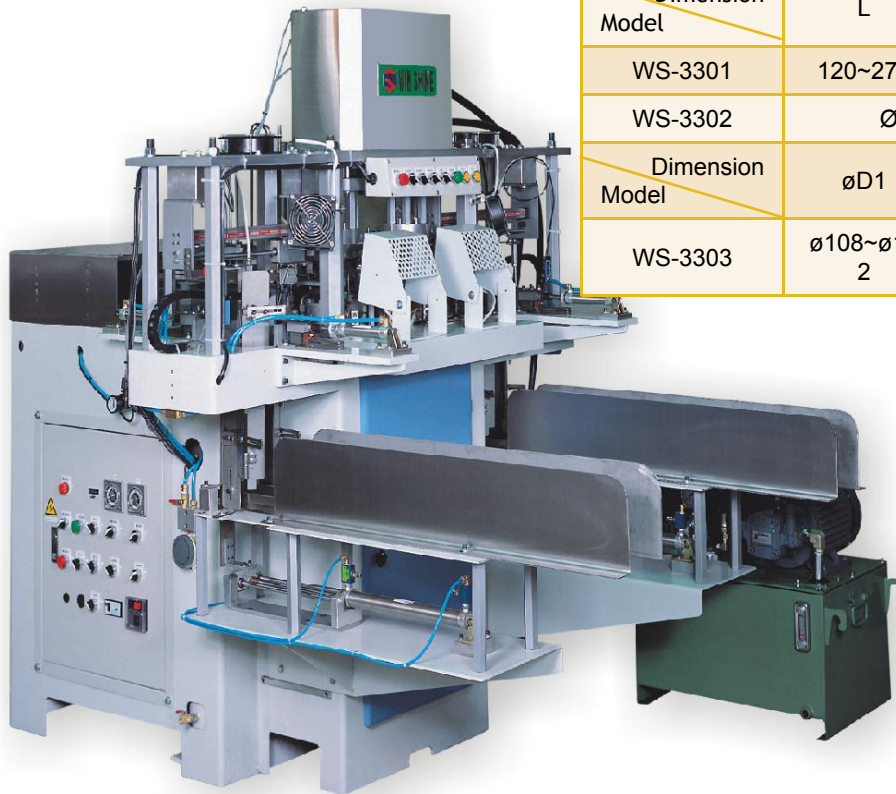
Model No.	WS-1107
Description	
Production Speed (pcs/min)	18-25
Paper Material	Single or double PE coated paper ISG-320-360 g/m ²
Sealing Method	Hot Air Heater or Hi-frequency sealing
Electrical Requirement	Approx. 5.5 kw
Compressed Air	Approx. 500 ℓ/min
Machine Dimension (Lx W x H cm)	250x160x230
Weight(NW kg)	900

◎ Custom design is welcomed

◎ We reserve the right to alter specifications without prior notice.

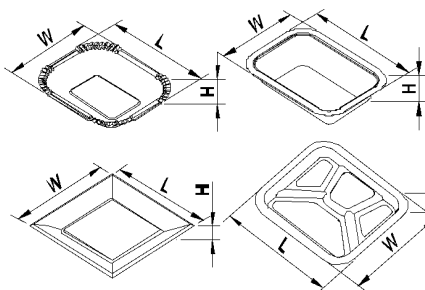
WS-3301 & WS-3302 & WS-3303

2-Mold Paper plate , bowl forming machine 【雙模】紙盤、紙碗成型機

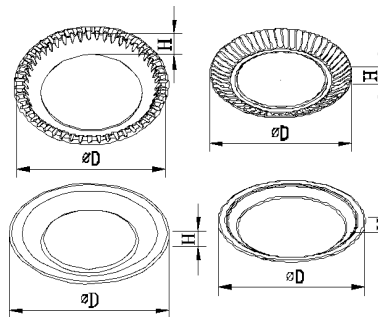


Dimension Model	L	W	H
WS-3301	120~270	120~230	15~25
WS-3302	Ø5"~Ø10"		15~25
Dimension Model	ØD1	ØD2	H
WS-3303	Ø108~Ø122	Ø56~Ø78	30~45

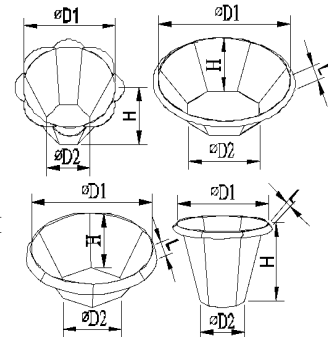
WS-3301 PRODUCT



WS-3302 PRODUCT



WS-3303 PRODUCT



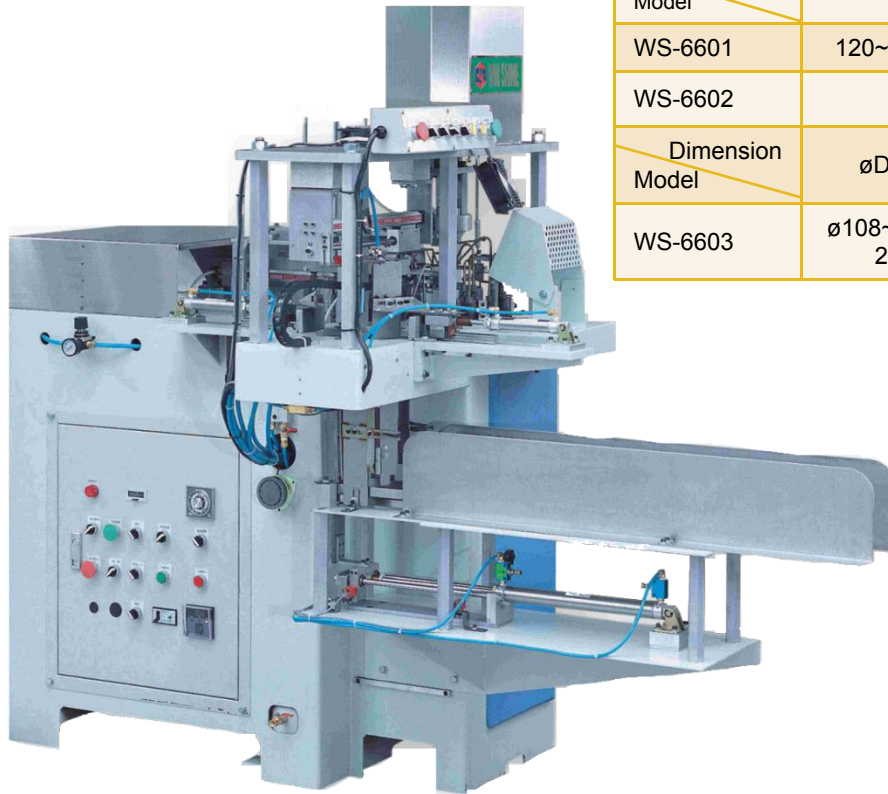
Model No.	WS-3301	WS-3302	WS-3303
Description			
Production Speed (pcs/min)	28~32		46~50
Paper Material	Single PE coated paper ISG-300~340 g/m ²		
Sealing Method	Hot Air Heater sealing		
Electrical Requirement	Approx. 15 kw		
Compressed Air	Approx. 500 l/min		
Machine Dimension (Lx W x H cm)	320x200x210		
Weight(NW kg)	1200		

©Custom design is welcomed

© We reserve the right to alter specifications without prior notice.

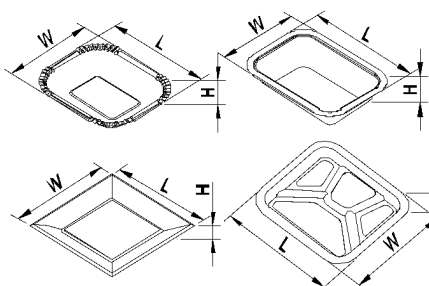
WS-6601 & WS-6602 & WS-6603

1-Mold Paper plate , bowl forming machine 【單模】紙盤、紙碗成型機

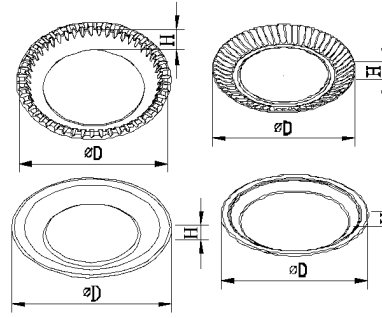


Dimension Model	L	W	H
WS-6601	120~270	120~230	15~25
WS-6602	Ø5"~Ø10"		15~25
Dimension Model	ØD1	ØD2	H
WS-6603	Ø108~Ø122	Ø56~Ø78	30~45

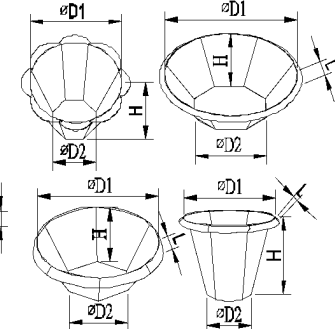
WS-6601 PRODUCT



WS-6602 PRODUCT



WS-6603 PRODUCT



Model No.	WS-6601	WS-6602	WS-6603
Description			
Production Speed (pcs/min)	16~18		23~25
Paper Material	Single PE coated paper ISG-300~340 g/m ²		
Sealing Method	Hot Air Heater sealing		
Electrical Requirement	Approx. 15 kw		
Compressed Air	Approx. 500 l/min		
Machine Dimension (L x W x H cm)	300x180x210		
Weight(NW kg)	900		

◎ Custom design is welcomed

◎ We reserve the right to alter specifications without prior notice.

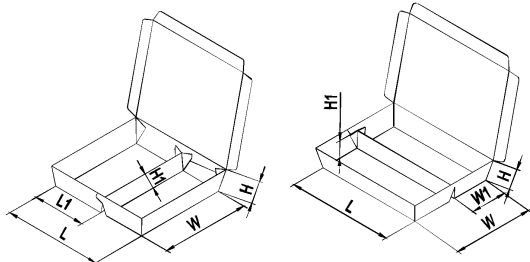
WS-8801 & WS-8802

Two Compartment Lunch box forming machine 兩格 紙盒成型機



WS-8801

WS-8802



UNIT: mm

Dimension Model	L	W	H
WS-8801	145~175	100~145	32~42
WS-8802	145~190	145~160	32~42

Model No.	WS-8801	WS-8802
Description		
Production Speed (pcs/min)	28~32	
Paper Material	Double PE coated paper ISG-300~340 g/m ²	
Sealing Method	Hot Air Heater sealing	
Electrical Requirement	Approx. 6.5 kw	
Compressed Air	Approx. 500 l/min	
Machine Dimension (Lx WxH cm)	280x130x240	
Weight(NW kg)	900	

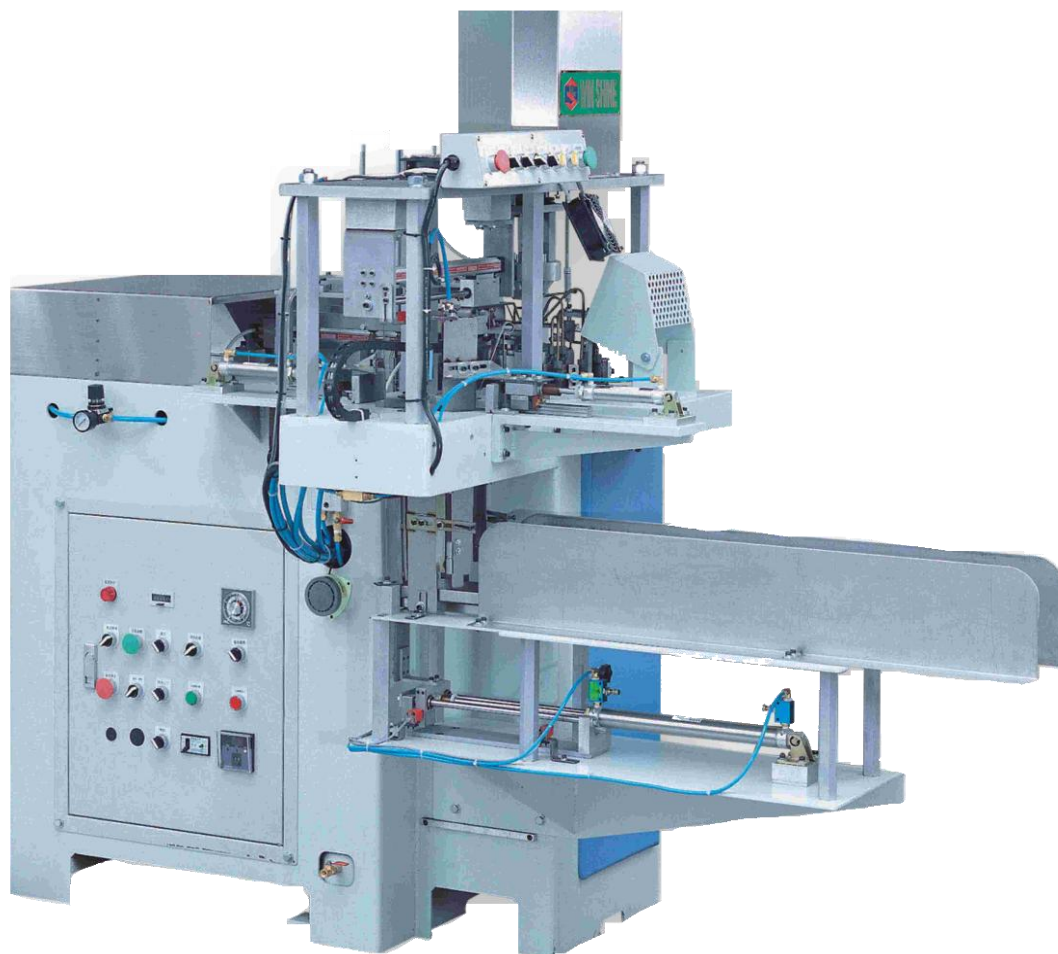
©Custom design is welcomed

© We reserve the right to alter specifications without prior notice.

WS-8804

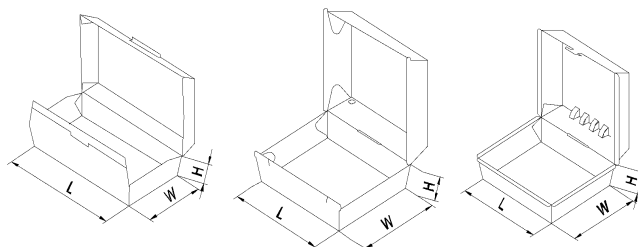
Hamburger box forming machine

漢堡盒成型機



UNIT: mm

Dimension Model	L	W	H
WS-8804	80~150	80~150	20~42



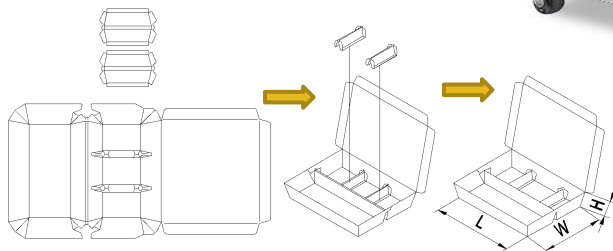
Model No.	WS-8804
Description	
Production Speed (pcs/min)	26~28
Paper Material	Single PE or double PE coated paper ISG-300~340 g/m ²
Sealing Method	Hot Air Heater sealing
Electrical Requirement	Approx. 6.5 kw
Compressed Air	Approx. 500 ℓ/min
Machine Dimension (L x W x H cm)	320x130x240
Weight(NW kg)	900

◎ Custom design is welcomed

◎ We reserve the right to alter specifications without prior notice.

WS-8809 SERIES

1-Mold 3-5 Compartment Lunch box forming machine 【單模】 三格.四格.五格紙餐盒系列



UNIT: mm

Dimension Model	L	W	H
E/EH/ED/EE	145-175	100-145	32-42
F/FH/B/BH	145-180	145-160	32-42

Model	WS-8809F	WS-8809F 双高週	WS-8809E	WS-8809EH 双高週	WS-8809B	WS-8809BH 双高週	WS-8809ED	WS-8809EE
Description								
Forming Model								
Mold	1 Mold							
Production Speed	13~18 pcs/min							
Sealing Method	Heater + Hi-frequency	Hi- frequency	Heater + Hi-frequency	Hi- frequency	Heater+ Hi-frequency	Hi- frequency	Heater+ Hi-frequency	Hi- frequency
Paper Material	Double PE coated paper ISG- 320g/㎡ ~ 350g/㎡							
Paper Thickness	Main Box 0.46mm ~ 0.50mm				Small divisions 0.38mm			
Electrical Requirement M/C + Hi-frequency	8.5Kw/hr. 50A+30A	3.5Kw/hr. 30A+30A	9.5Kw/hr. 50A+30A	4Kw/hr. 30A+30A	8.5Kw/hr. 50A+30A	3.5Kw/hr. 30A+30A	9.5Kw/hr. 50A+30A	4Kw/hr. 30A+30A
Air Requirement	6kg/c㎡ x 750 L/min							
M/C Dimention	360 x 150 x225 cm							
Weight(NW kg)	1200							

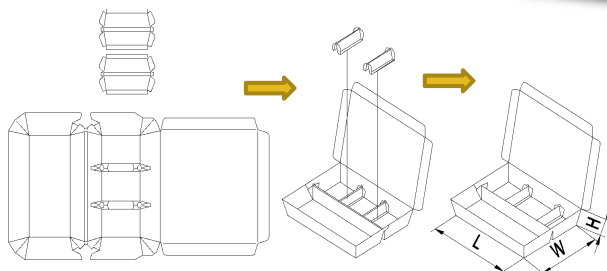
©Custom design is welcomed

© We reserve the right to alter specifications without prior notice.

WS-8809 SERIES

2-Mold 3-5 Compartment Lunch box forming machine

【雙模】四格.五格餐盒系列



UNIT: mm

Dimension	L	W	H
Model			
A/AD/K/KD	145~175	100~145	32~42
D/DD/L/LD	145~180	145~160	32~42

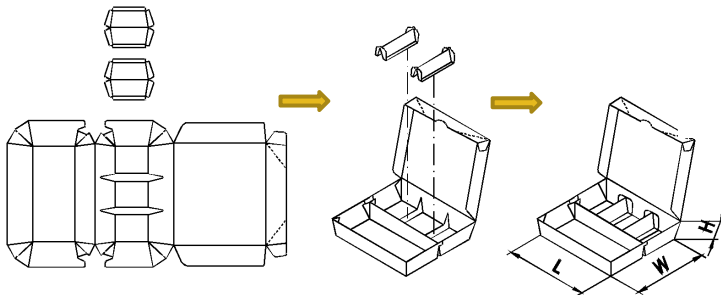
Model	WS-8809A	WS-8809AD 双高週	WS-8809D	WS-8809DD 双高週	WS-8809K	WS-8809KD 双高週	WS-8809L	WS-8809LD
Description								
Forming Model								
Mold	2 Mold							
Production Speed(pcs/min)	25±1	20±1	25±1	20±1	22±1	18±1	22±1	18±1
Sealing Method	Heater Hi-frequency	Hi- frequency	Heater + Hi-frequency	Hi- frequency	Heater+ Hi-frequency	Hi-frequency	Heater+ Hi-frequency	Hi-frequency
Paper Material	Double PE coated paper ISG- 320g/ m ² ~ 350g/ m ²							
Paper Thickness	Main Box 0.46mm ~ 0.50mm				Small divisions 0.38mm			
Electrical Requirement M/C + Hi-frequency	8.5Kw/hr 50A+30A	5Kw/hr. 30A+30A	9.5Kw/hr. 50A+30A	6Kw/hr. 30A+30A	8.5Kw/hr. 50A+30A	5Kw/hr. 30A+30A	9.5Kw/hr. 50A+30A	6Kw/hr. 30A+30A
Air Requirement	6kg/c m ² x 1200 L/min							
M/C Dimention	360 x 270 x225 cm							
Weight(NW kg)	1800-2300							

◎ Custom design is welcomed

◎ We reserve the right to alter specifications without prior notice.

WS-8809HC

3-5 Compartment Lunch box forming machine 【自扣式】三格，四格，五格，紙餐盒成型機



UNIT: mm

L	W	H
145~210	150~180	38~50

Model	WS-8809HC
Description	
Mold	1 Mold
Production Speed	14 pcs/min
Sealing Method	Heater + Hi-frequency
Material	Double PE coated paper ISG- 320g/ m ² ~350g/ m ²
Paper Thickness	Main Box 0.46mm ~ 0.50mm Small divisions 0.38mm
Electrical Requirement M/C + Hi-frequency	8.5Kw/hr. 50A+30A
Air Requirement	6kg/c m ² x 500 L/min
M/C Dimention	450 x 180 x400 cm
Weight(NW kg)	1500

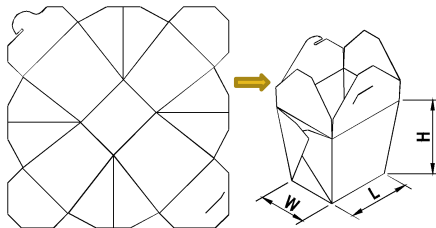
©Custom design is welcomed

© We reserve the right to alter specifications without prior notice.

WS-9902

1 Mold Paper pail, to-go box forming machine

【單模】外帶盒成型機



UNIT: mm

L	W	H
61~112	46~95	60~110

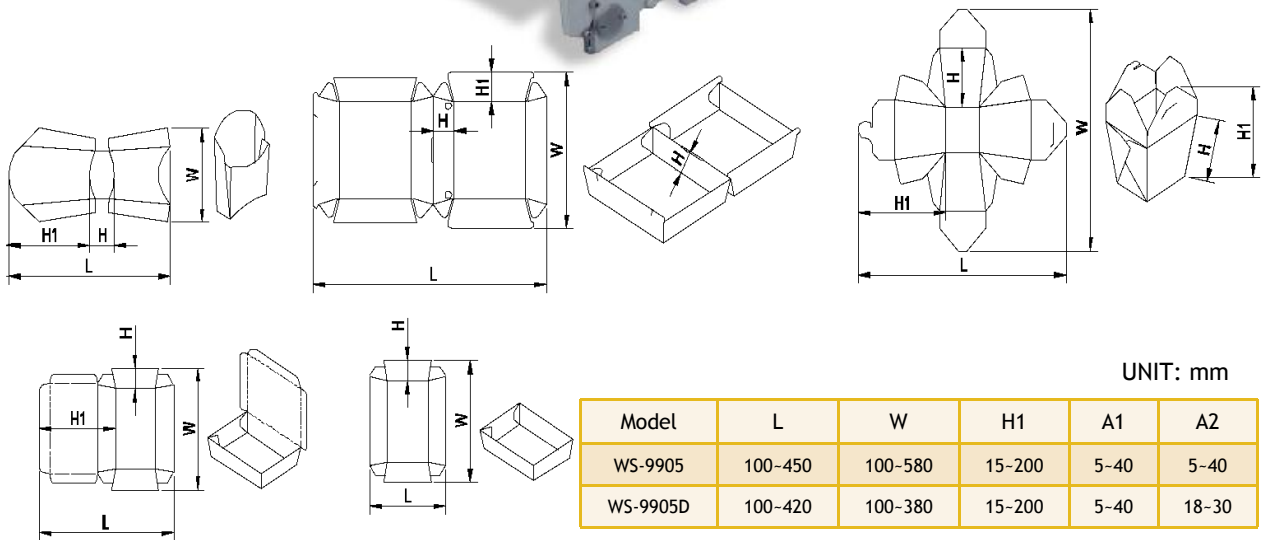
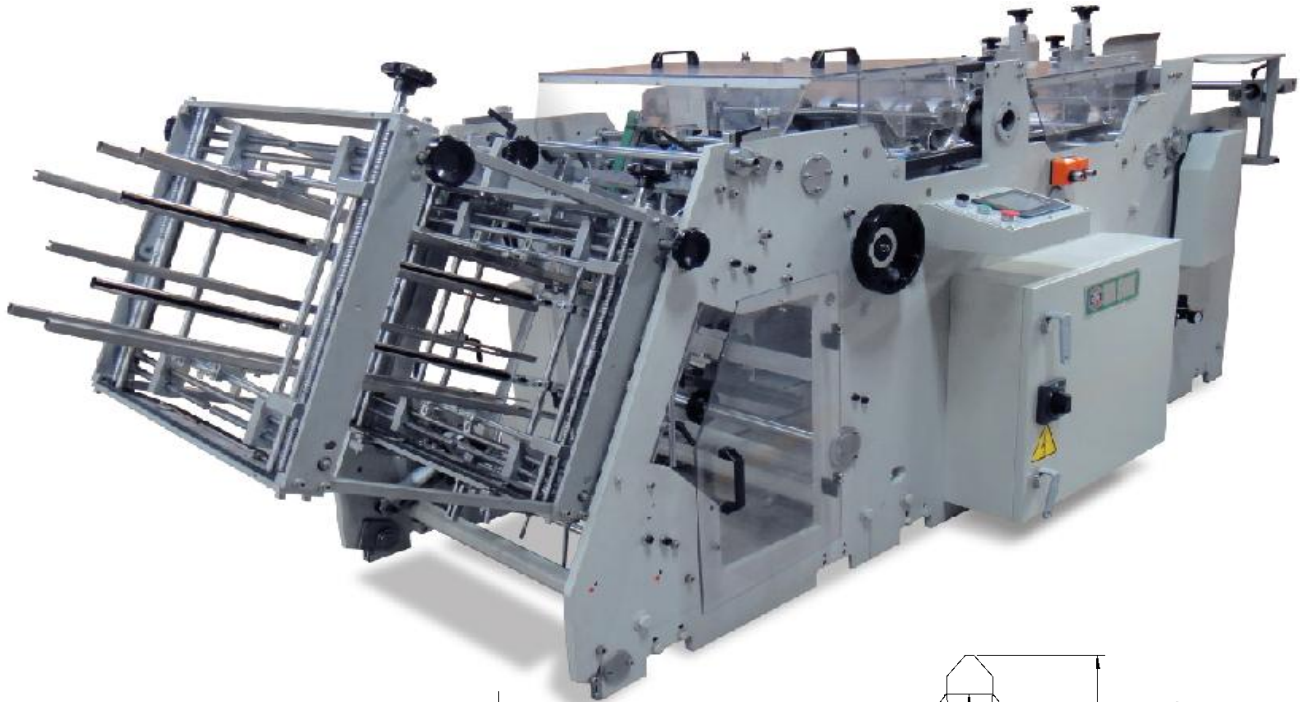
Model	WS-9902
Description	
Mold	1
Production Speed	28-32 pcs/min
Sealing Method	Heater
Paper Material	Single PE or double PE coated paper ISG-280g/ m ² ~ 340g/ m ²
Paper Thickness	0.38mm ~ 0.48mm
Electrical Requirement	14Kw/hr
Air Requirement	6kg/ c m ² * 500 L/min
M/C Dimention	350x150x180cm
Weight(NW kg)	1200

©Custom design is welcomed

© We reserve the right to alter specifications without prior notice.

WS-9905 : 1 Mold Paper pail, Carton erecting and gluing machine 高速【單模】外帶盒成型機

WS-9905D : 2 Mold Paper pail, Carton erecting and gluing machine 高速【雙模】外帶盒成型機



UNIT: mm

Model	L	W	H1	A1	A2
WS-9905	100-450	100-580	15-200	5-40	5-40
WS-9905D	100-420	100-380	15-200	5-40	18-30

Model No.	WS-9905		WS-9905D
Description			
Mold	1		2
Production Speed (pcs/min)	Servo: 80~180	Crank: 80~120	Servo: 160~360
Material	200 ~ 600g/ m ² cardboard or corrugated board E/F/N flute		
Paper Thickness	0.36~1.5mm		
Sealing Method	Glue Sealing		
Electrical Requirement	Approx. 3 kw		Approx. 3.5 kw
Compressed Air	Approx. 100 ℓ/min		Approx. 200 ℓ/min
Machine Dimension (Lx Wx H cm)	370x138x150		370x160x150
Weight(NW kg)	2000		2200

WS-9905 : 1 Mold Paper pail, Carton erecting and gluing machine 高速【1模】外帶盒成型機

WS-9905D : 2 Mold Paper pail, Carton erecting and gluing machine 高速【2模】外帶盒成型機

GULE GUN UNIT (Optional)_



COLLECT TABLE (Optional)



CONTROL UNIT



COLLECT UNIT : WS-9905



COLLECT UNIT : WS-9905D



COUNT UNIT



Introduce:

Carton Erecting Machine is a special forming machine to produce burger box, one block box, food pail box(togo box),French Fires box and so on containers made by cardboard paper and corrugated paper.

Materials:

Cardboard paper one side PE coated paper (200-600GSM),or corrugated paper with maximum thickness 1.5MM.

PS:

Also can produce containers made by aluminum foiled paper,2PE or 1PE coated paper with hot gluing system.

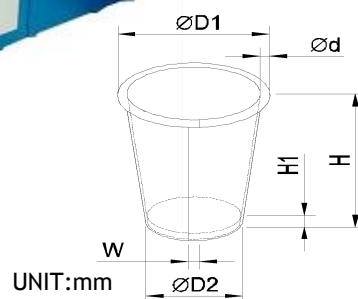
Advantages:

- 1.Ability of producing different products by the same machine. Shortage changing mold's time. Easy changing mold.
- 2.Controlled by PLC.
- 3.Finished products are collected ,stacked , and counted automatically.

WS-M CUP SERIES

Paper cup forming machine

中速紙杯成型機



Model No.		Description					
		WS-MCA	WS-MCB	WS-MCC	WS-MCD	WS-MCE	WS-MCAA
Cup volume (oz)		6-12	13-18	20-35	23-30	16-22	2.5-5
Product main size (mm)	Ød1	65-98	100-125	125-145	148-168	65-98	65-98
	Ød2	40-92	-	61-118	61-118	-	40-92
	H	60-90	60-90	70-110	60-90	90-155	40-50
	H1	6-8	6-8	6-8	6-8	6-8	6-8
	W	7-9	7-9	7-9	7-9	7-9	7-9
Production Speed (pcs/min)		MAX: 80					
Material		Single or double PE coated paper ISG-190-360 g/m ²					
Sealing Method		Hot Air Heater or ultrasonic sealing					
Electrical Requirement		Approx. 13.2 kw					
Compressed Air		Approx. 0.6mpa					
Machine Dimension (Lx W x H cm)		290x190x190					
Weight(NW kg)		3500					

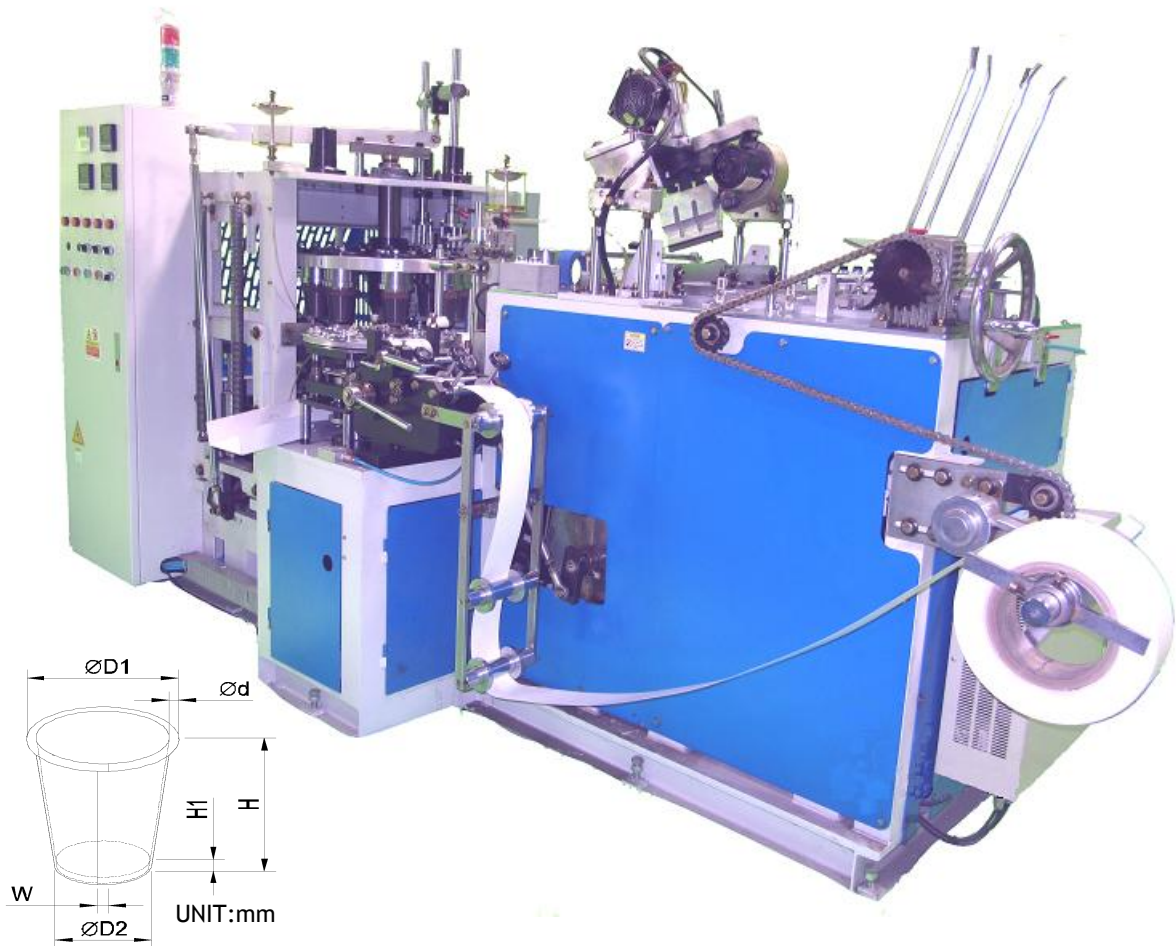
© Custom design is welcomed

© We reserve the right to alter specifications without prior notice.

WS-P CUP SERIES

Paper cup forming machine

低速紙杯成型機



Model No.		WS-PCA	WS-PCB	WS-PCC	WS-PCD	WS-PCE	WS-PCAA
		Description					
Cup volume (oz.)		6-12	13-18	20-35	23-30	16-22	2.5-5
Product main size (mm)	Ød1	65-98	100-125	125-145	148-168	65-98	65-98
	Ød2	40-92	-	61-118	61-118	-	40-92
	H	60-90	60-90	70-110	60-90	90-155	40-50
	H1	6-8	6-8	6-8	6-8	6-8	6-8
	W	7-9	7-9	7-9	7-9	7-9	7-9
Production Speed (pcs/min)		MAX: 60					
Material		Single or double PE coated paper ISG-240-360 g/m ²					
Sealing Method		Hot Air Heater or ultrasonic sealing					
Electrical Requirement		Approx. 10-12 kw					
Compressed Air		Approx. 0.6mpa					
Machine Dimension (Lx Wx H cm)		285x186x177					
Weight(NW kg)		2500-2600					

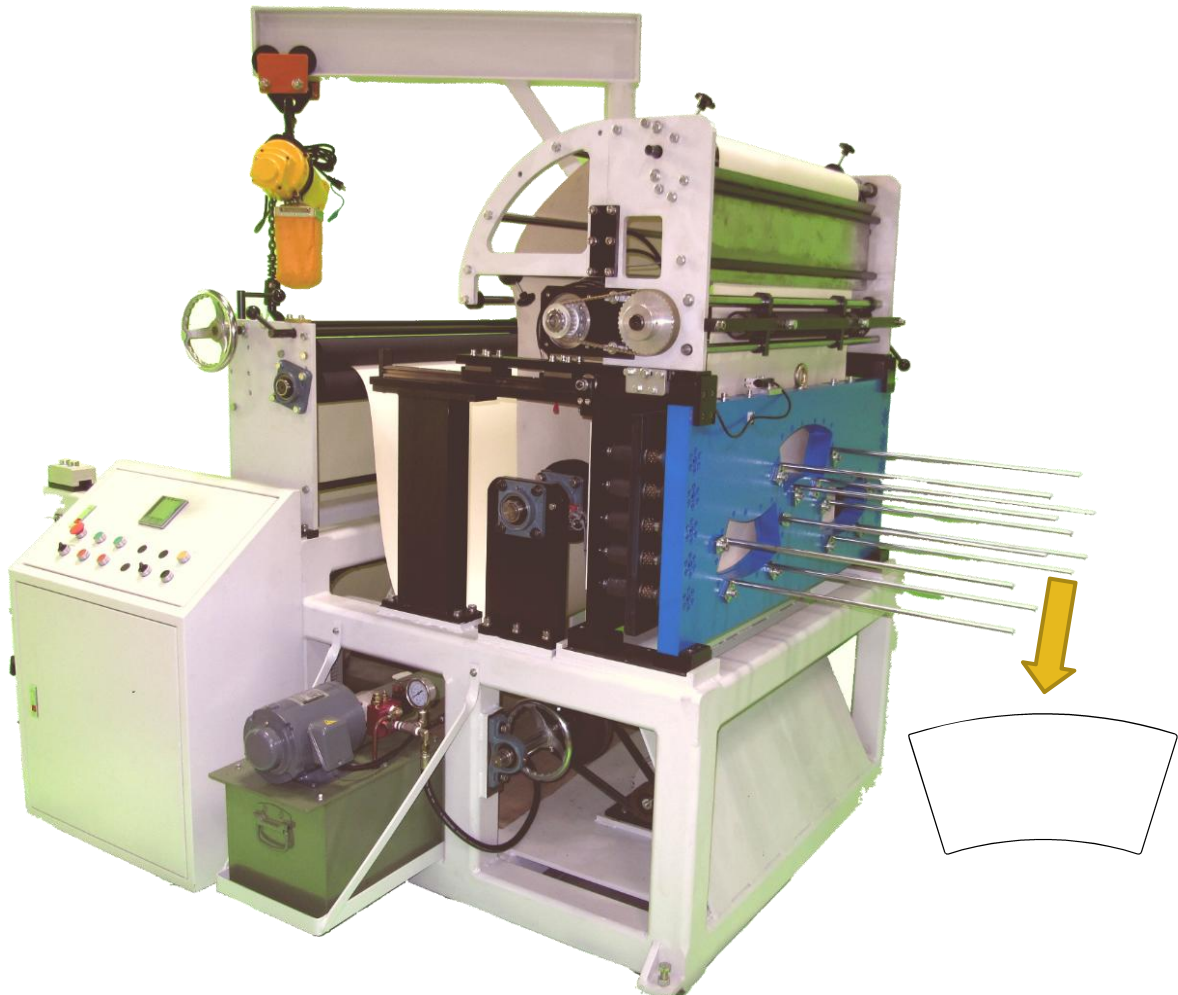
©Custom design is welcomed

© We reserve the right to alter specifications without prior notice.

WS-P850

Paper Punching Machine

高速多模切紙片成型機



Model No.	WS-P850
Description	
Paper Roll's request range	Specification: 125 gsm ~ 350gsm Outer Diameter: Under 1.5M Inter Diameter: 97mm Wide of the paper roll: Under 950mm
Cutting Speed (cy/min)	200~280
Machine's Weight (kgs.)	1700
Dimensions for machine (L x W x H)	590x210x200cm
Power Consumption (kw)	4~6
Compressed air consumption	0.5MPa

◎ Custom design is welcomed

◎ We reserve the right to alter specifications without prior notice.